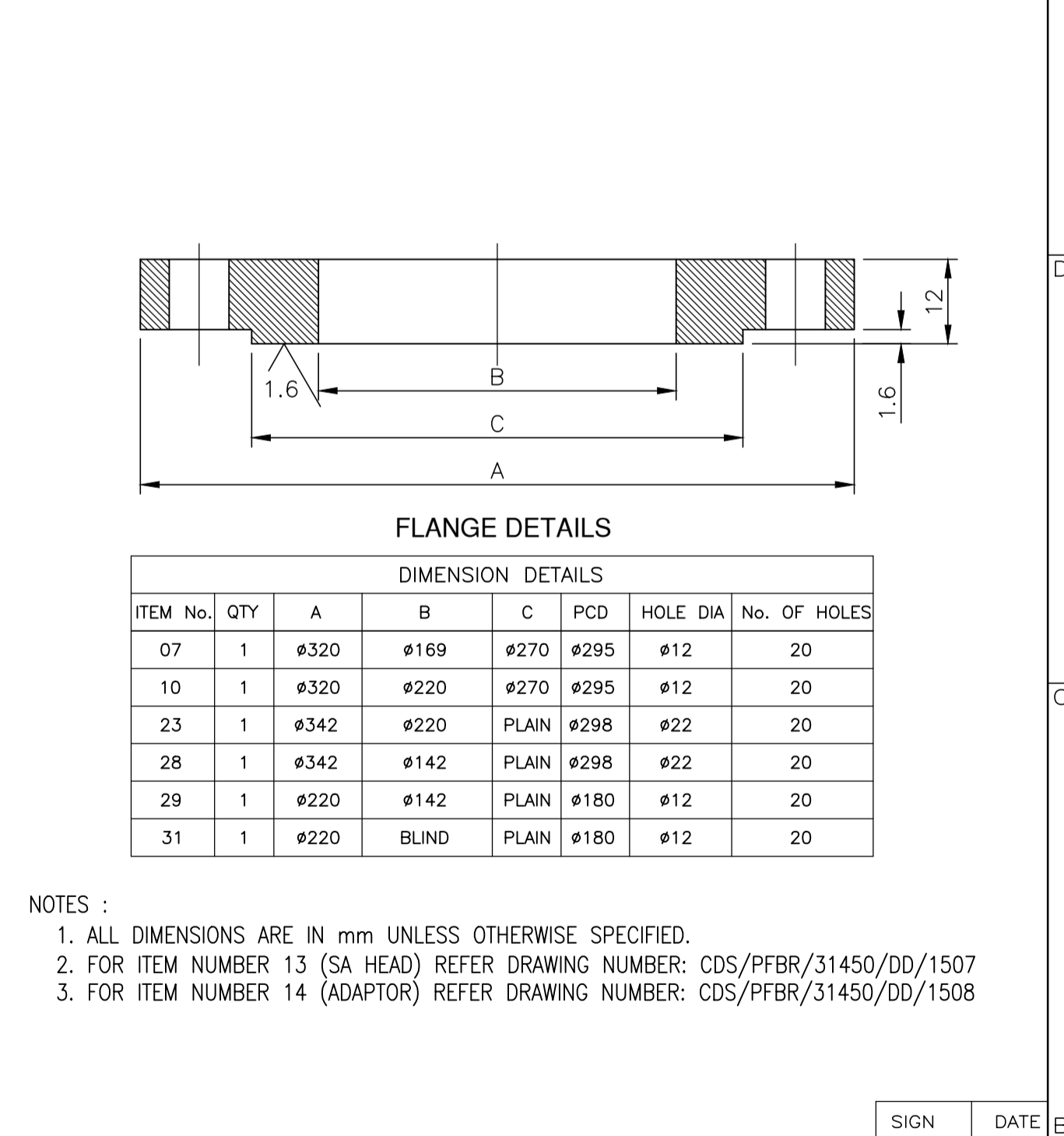


BILL OF MATERIAL				
ITEM No.	QTY	DESCRIPTION	MATERIAL	REMARKS
01	2	1/4" NIPPLE	SS304L	STD
02	2	1/2" NIPPLE	SS304L	
03	2	2" SLIP ON FLANGE #150	SS304L	STD
04	1	GASKET OD92xID62x5THK	NEOPRENE	
05	4 SET	M16x80 HEX. BOLT , NUT & WASHER	HT BOLT	STD
06	1	REDUCER 6"-2"	SS304L	STD
07	1	FLANGE OD320xID169x20THK	SS304L	
08	2	GASKET OD270xID220x5THK	NEOPRENE	
09	1	FLANGE OD320xID133AFx12THK	SS304L	
10	1	FLANGE OD320xID220x20THK	SS304L	
11	12SET	M10x100 HEX. BOLT , NUT & WASHER	HT BOLT	STD
12	6	STRIP 193x76x4THK	SS304L	
13	1	SA HEAD (SEE NOTE: 2)	SS304L	
14	1	ADAPTOR (SEE NOTE: 3)	SS304L	
15	1	8" SCH40 PIPEx1037L	SS304L	STD
16	1	TUBE BOTTOM PART Ø114x277L	SS304L	
17	1	TUBE MIDDLE PART Ø80x500L	SS304L	
18	1	TUBE UPPER PART Ø80x286L	SS304L	
19	1	COVER FLANGE Ø80x20THK	SS304L	
20	6	HEX. SOC. HD. CAP SCREW M6x20 IS: 2269 P8.8		
21	1	SENSOR ROD Ø20x649L	SS304L	
22	3	COUNTERSUNK FLAT HEAD SCREW M3x8.5 IS: 1365 P4.8		
23	1	FLANGE OD342xID220x20THK	SS304L	
24	1	8" RUBBER BELLOW (FLEXIBLE)	RUBBER	STD
25	16SET	M18x100 HEX. BOLT , NUT & WASHER	HT BOLT	STD
26	1	5" SCH40 PIPE 617L	SS304L	STD
27	1	BOTTOM PLATE OD128xID80x6THK	SS304L	
28	1	FLANGE OD342xID142x20THK	SS304L	
29	1	FLANGE OD220xID142x20THK	SS304L	
30	1	GASKET OD186xID142x5THK	NEOPRENE	
31	1	BLIND FLANGE OD220x20THK	SS304L	
32	8SET	M10x100 HEX. BOLT , NUT & WASHER	HT BOLT	STD
33	2	2" SCH40 PIPE 300L	SS304L	STD
34	2	2" BALL VALVE	SS304L	STD
35	1	OD 203 x ID 143 x 10 THK.	SS304L	STD



THIS DESIGN AND DRAWING IS THE PROPERTY OF THE INDIRA GANDHI CENTRE FOR ATOMIC RESEARCH. IT MUST BE RETURNED WITH QUOTATION OR UPON DELIVERY OF MATERIAL AND EQUIPMENT AND MUST NOT BE USED EXCEPT BY THE PERMISSION OF THE OWNER

REFERENCE DRAWINGS	DRG. No.	ISSUE No.	REV. No.	DRAWING RELEASED FOR	SIGNATURE & DATE	No.	LOC.	DESCRIPTION	DRN.	CHD.	APPD	MATERIAL	GENERAL TOLERANCES
													LENGTHS 0 to 50 ± 0.1 50 to 120 ± 0.2 120 to 315 ± 0.3 > 315 ± 0.4
													LENGTHS SHAFT H 12 HOLE H 12

GOVERNMENT OF INDIA
INDIRA GANDHI CENTRE FOR ATOMIC RESEARCH
FAST REACTOR TECHNOLOGY GROUP

CFMM TEST SET UP

ORIGINATING AGENCY: E T H D

DRG. No.ETHD/HES/99204/DD/3122

SH.1 OF 1 REV.No.1

SIGN: DESD PKA
DATE: 13.01.2021
CHD I B
DRN J D
CHD PKA
APPD V V
SCALE: 1:3
PROJECTION:

DRG. No.ETHD/HES/99204/DD/3122_R.1

KR/PIYUSH/CFMM