

THIS DESIGN AND DRAWING IS THE PROPERTY OF THE INDIRA GANDHI CENTRE FOR ATOMIC RESEARCH. IT MUST BE RETURNED WITH QUOTATION OR UPON DELIVERY OF MATERIAL AND EQUIPMENT AND MUST NOT BE USED EXCEPT BY THE PERMISSION OF THE OWNER

ISSUE No.	REV. No.	DRAWING RELEASED FOR	SIGNATURE & DATE
1	0	FABRICATION	

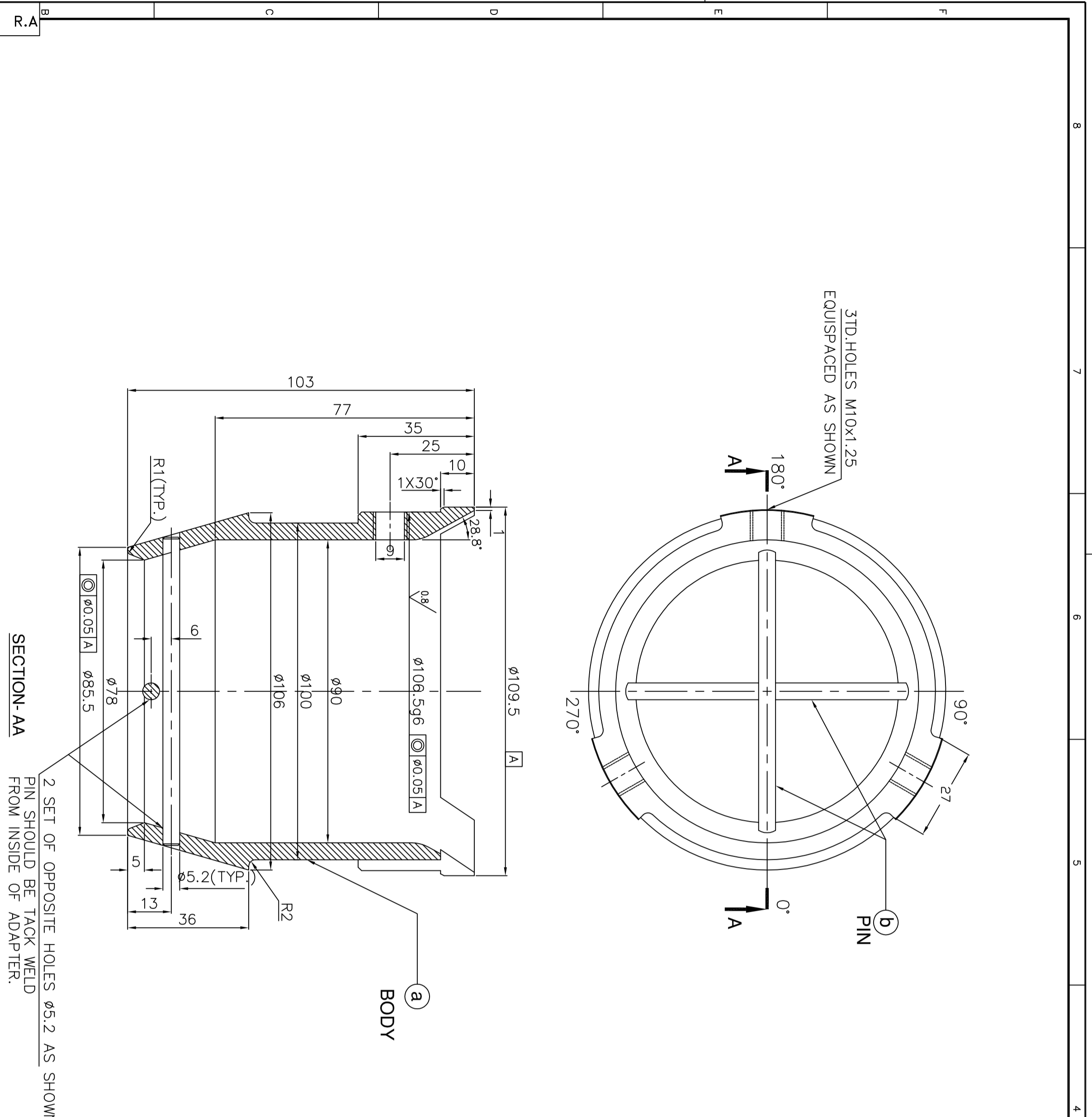
MATERIAL	AS PER BILL OF MATERIAL
QTY. PER ASSEMBLY	-
WT. PER PIECE IN KG.	-
HEAT TREATMENT	
SURFACE TREATMENT	
MIN. SURFACE FINISH & OTHER INFORMATION	3.2 ✓

DESIG. & GRADE	DEVIATIONS
$\phi 106.5g6$	$-0.012$ $-0.034$
GENERAL TOLERANCES	
LENGTHS	0 to 50 $\pm 0.1$ 50 to 120 $\pm 0.2$ 120 to 315 $\pm 0.3$ > 315 $\pm 0.4$
DIAMETER	SHAFT h 12 HOLE H 12

INDIRA GANDHI CENTRE FOR ATOMIC RESEARCH	GOVERNMENT OF INDIA
PROJECT: PROTOTYPE FAST BREEDER REACTOR	
TITLE: ADAPTOR ASSEMBLY	
ORIGINATING AGENCY: CDS/FRTG	
DRG. No. CDS/PFBR/31450/DD/1508	
REV. No. A	

REVISIONS
No. LOC. DESCRIPTION
A - PART NAME IS CORRECTED.

DESIGNER	DATE
CHD.	DATE:
DRN.	DATE:
CHD.	DATE:
REVD.	DATE:
APPD.	DATE:
SCALE	1:1
PROJECTION	



BILL OF MATERIAL			
ITEM No. OFF.	DESCRIPTION	MATERIAL	REMARKS
a 1	ADAPTOR	SS304L	
b 2	PIN	SS304L	
c 3	HEX. SOC. HD. GRUB SCREW M10x8 LG.	SS304L	

**NOTE :**

- ALL DIMENSIONS ARE IN MM.
- ALL SHARP CORNERS SHOULD BE ROUNDED TO R0.5 mm(MAX.).